



# GMT MONTHLY MEMBERSHIP PROGRESS REPORT

Results as of: 6/30/2018

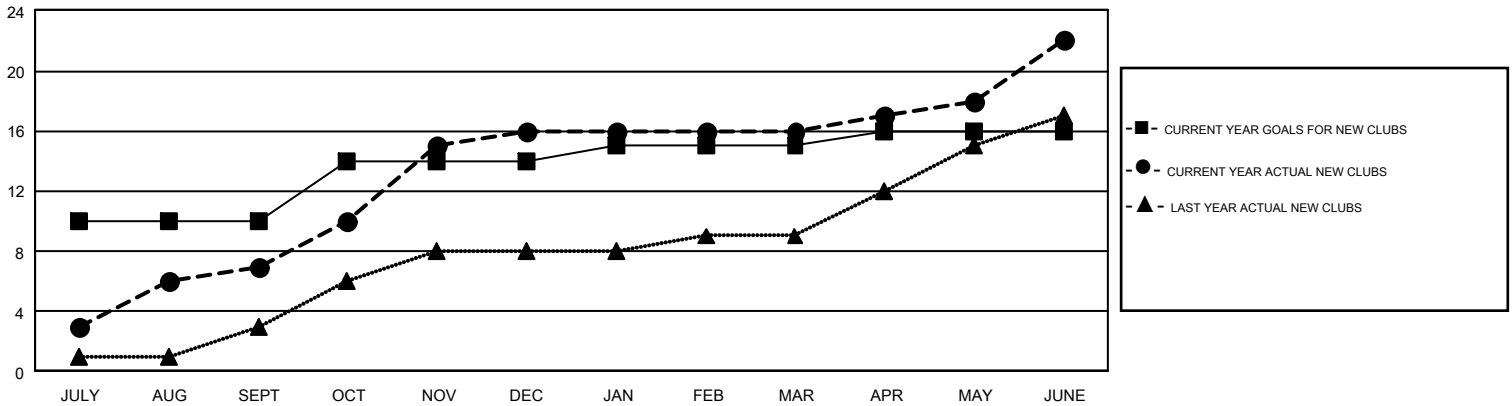
## GMT Constitutional Area 5, Group G

GMT: TERESA MANN

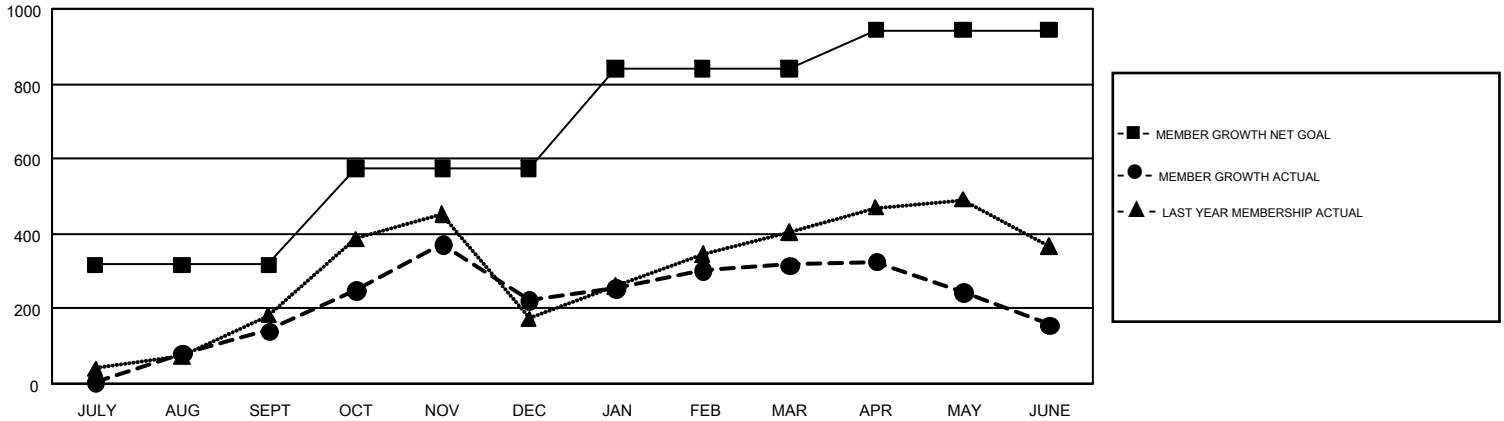
REPORT DOES NOT INCLUDE CLUBS IN UNDISTRICTED AREAS.

Clubs				Members			
RESULTS FOR 2017-2018				RESULTS FOR 2017-2018			
QUARTER	NEW CLUB GOAL	NEW CLUBS	DROPPED CLUBS	QUARTER	MEMBER GROWTH NET GOAL	MEMBER GROWTH ACTUAL	DROPPED MEMBERS ACTUAL (including transfers)
JULY/AUG/SEPT	10	7	2	JULY/AUG/SEPT	317	526	361
OCT/NOV/DEC	4	9	1	OCT/NOV/DEC	258	488	392
JAN/FEB/MAR	1	0	1	JAN/FEB/MAR	265	283	175
APR/MAY/JUNE	1	6	0	APR/MAY/JUNE	103	670	804

GOALS AND ACTUAL NEW CLUBS CUMULATIVE



GOALS AND ACTUAL MEMBERS CUMULATIVE



DROPPED CLUBS: 4	266 CLUBS OF 382 ADDED 1 OR MORE NEW MEMBERS	<b>GENDER DISTRIBUTION</b> MALE 5,944 (59.00%) FEMALE 4,131 (41.00%)
<b>DROPPED MEMBERS</b> DECEASED 41 CLUB CANCELLED 40 OTHER 1,651 <b>TOTAL 1,732</b>	<a href="#">CLICK HERE FOR CUMULATIVE MEMBERSHIP DATA</a>	TOTAL FAMILY UNIT MEMBERS 0 FAMILY MEMBERS PAYING HALF DUES 0